

Uitstillingskatalogus  
Exhibition catalogue

DEPARTMENT OF VISUAL ARTS  
CENTENARY EXHIBITION

**Visuality/Commentary**

12 -21/05/2008



UNIVERSITEIT VAN PRETORIA  
UNIVERSITY OF PRETORIA  
YUNIBESITHI YA PRETORIA  
Faculty of Humanities



# ARCHITECTURE GALLERY/ ARGITEKTUURGALERIJ



CLOET, MARK  
*De dood van Jeanne Coucke,*  
1994  
Charcoal on paper. 750 x 560mm  
R10 625-00  
Artist's book: Archer's paper,  
linseed oil, graffiti, white zinc



CLOETE, DEBBIE  
*Bring with you a heart that  
watches and receives,* 2008  
Digital print on textile. Five panels.  
70cm x 2.5m each



DU PREEZ, LINDA  
*Arc 1, II, II,* 2007  
Relief. Plaster of Paris. 60 x 60 x  
20cm



DU TOIT, GUY AND CRAFFORD,  
CARLA  
*Visual dialogue,* 2007  
Worked bronze, digital  
photography and mirrors. Eight  
pieces, each approximately 222 x  
1200mm



Bird / hare



Box



Cream

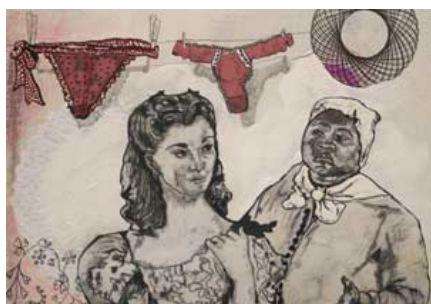
MACKINTOSH, THERESA-ANNE  
*Bird hare, Box, Cream*



*Tina*  
Fibreglass. 152 x 55 x 50cm



OLDFIELD, ADÈLE  
*Wo-man, 2008*  
Mixed media. 100 panels, each  
panel. 15 x 21cm





SWARTS, TALITA  
*Kwere kwere*  
Mixed media, radio installation. 2 x  
2m

## RAUTENBACHSAAL/ RAUTENBACH HALL



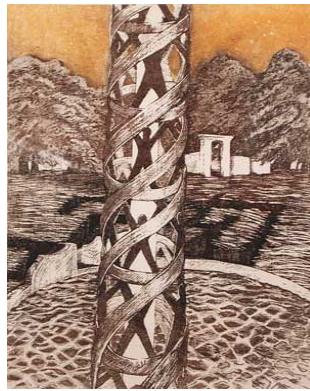
ADENDORFF, ADÈLE  
*Re-collection, 2007*  
Oil on canvas. 500 x 2000 x 70mm



ARCHER, ANNE  
*The indeterminate III, 2007*  
Oil and acrylic on canvas. 1110 x  
1410mm



BADENHORST, ZUANDA  
*Stille getuie (Silent witness)*, 2008  
Mixed media on paper painting. 58  
x 45cm  
R1 875-00  
Multimedia hanging. 149 x 112cm



BALLOT, TITIA  
*Triptych for the promised land*,  
1994/1998  
(Left) *Golden calf* (Centre) *Moria*  
(Right) *Column of fire*  
Colour etching (soft ground and  
photo-etching) on Hahnemühle  
350g etching paper. 51 x 38cm  
each  
Courtesy of University of  
Stellenbosch





BANKS, ANGELA  
*100 Years of success*  
Oil on canvas, 1m x 1m



BENADÉ, HANNEKE  
*Knowledge of good and evil*, 2008  
Pastel on cotton paper. 900 x  
700mm



BINSBERGEN, PIETER  
*Criss cross winter near Warden*  
Oil on canvas. 46 x 61cm



BODENSTEIN-FERREIRA, ERNA  
*The female gaze: in pursuit of knowledge*  
Digital print from scraperboard matrix and acrylic on canvas. 3,15 x 2,60m



BOWKER, ANNELEISE  
*Gemessel in oersteen (Built in primordial rocks)*  
Collograph. 80 x 640mm



BUITENDACH, RETHA  
Left: *Gorgon stag beetle – Ptesaurus gordon*  
Assemblage of found objects. 42 x 57 x 11cm



Right: *Longhorn lobster beetle – Cerambycidae maritimus*  
Assemblage of found objects. 42 x 57 x 11cm



CILLIERS-BARNARD, BETTIE  
*Dawn of civilization*, 1984  
Oil on canvas. 120 x 180cm



CLARKE, JOHN FC  
*Cornerstone No. 5*, 2007  
Pastel on paper. 740 x 1040mm



CONRADIE, JOHAN  
*Perfection and Perdition Series I and II*, 2008  
Digital print on Hylide paper. 60 x 90cm



DE KOCK, ETIENNE  
*Metanome 7* (viewer activated mobile sculpture), 2005. Forged steel, timber, found objects. Height 3.5m, footprint 1 x 3m  
*Fulcrum*, 2004. Forged steel, timber, stone, sand. Length 3.8m, width 3 m, height 1.6m



DE WEERDT, MARILI  
*The trouble with the teacup*, 2008  
Mixed media. 255 x 280 x 200mm

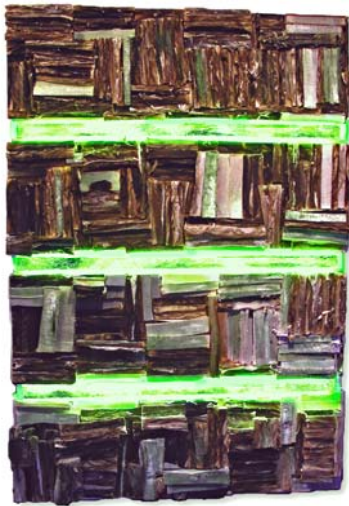


DIEDERICKS, CHRISTIAAN  
*Long before the fathers of the fathers*, 2006  
Linocut on 100% cotton acid free  
Hahnemühle paper. 23 x 15cm  
(unframed)



DIETRICH, KEITH  
*Fourteen stations of the Cross*,  
2007  
*Station 11: Leliefontein I, II, II.*  
Kamiesberg, Leliefontein. London  
Missionary Society, 1808.  
Johannes Seidenfaden and  
Bastiaan Tromp.  
Digital prints. 140 x 30cm





DREYER, ELFRIEDE  
*Verneem (Learned)*, 2008  
 Paper, acrylic, oils and neon on board. 1900 x 1200 x 100mm



EDWARDS, MIKE  
*Prayer for Africa*, 2006/7  
 Bronze. 1505 x 720 x 750mm



EKSTEEN, FRIKKIE  
 (Left) *Portrait of Prof Flip Smit* by F Eksteen, 1995  
 Oil on canvas. 100 x 80cm  
 Collection of the University of Pretoria  
 (Middle) Manipulated portrait composites showing different states of transition, 2008  
 (Right) *Portrait of Dr Johan van Zyl* by F Eksteen, 2001  
 Oil on canvas. 100 x 80cm  
 Collection of the University of Pretoria



FROUD, GORDON CLARK  
*Sphere*, 2008  
Coat hangers. 3m high



GRADWELL, MARGARET  
*Scarred and Tethered*, 2008  
Mixed media. 100 x 200cm



GREEFF, HEIDI-KATE  
*Floating in-between*, 2007  
Hand modelled ceramic. 30 x 37cm



GROBLER, NICOLA  
*Accidental Species V, VI, VII and VIII*, 2008  
Ink on paper. 700 x 500mm each



HOFFMANN, ERASMUS  
JOHANNES RUAN  
Untitled ceramic works, 2008



HUGO, HELENA  
*Brick worker*, 2008  
Pastel on paper. 1500 x 900mm



JACOBS, MELANI  
*Rejoice*  
Mixed media. 180 x 85cm



KARSTEL , ANTON  
*108166N*, 2004  
Installation. 7 x 6m



KEITH, MARLISE  
*Ma-Sak*, 2007/8  
Acrylic ink, pencil, gesso, on  
plywood  
Left panel: 1.2 x 1m  
Right panel: 1 x 1m



KRITZINGER, LOUISE  
*Mr Tikolôsj*, 2007  
Jacaranda wood, resin and  
concrete. 2000 x 560 x 550mm



LEKALA, JOHN  
*Untitled*, 2007  
Etching and dry point. 20 x 45cm



LIGHTENING, CALEB  
*Dingang's Day and the Attack of the  
Killer BEEs!* 2008  
Black ink drawing on reinforced  
paper. 1365 x 1605mm



MAKHUBELA, ABRAHAM  
*Die Woord (The Word)*  
Bronze. 150 x 100 x 400mm



MARLEY, IAN  
*Appear disappear:* part of a series  
of drawings entitled *Blind spot*  
Drawing charcoal and spraypaint on  
Fabriano. 150 x 200cm



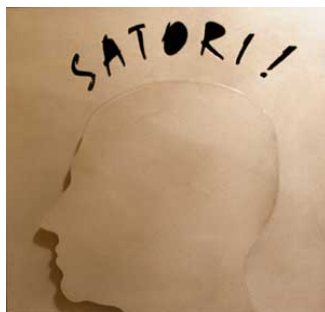
MASWANGANYI, COLLEN  
*Doctor*, 2007  
Cocker wood. Height: 90cm



MEERKOTTER, DIRK  
*Crescendo*, 2005  
Acrylic on canvas. 850 x 540mm



MEYER, WALTER  
*People, Touws River*, 2007  
Oil on canvas. 56 x 76cm



MICHALETOS, ALETA  
*Satori 2002* (prototype for limited edition)  
Metal, neon. Outer dimension 500x 500mm  
*Is the grass greener on the other side?* 2002  
Oil on board. Total outer dimension: 630 x 630mm



MILLER, GWENNETH  
*Holy relics*  
Digital print: Ultra Chrome Inks on  
Hahnemühle paper. Format: ± A1



MOSAKO, DANIEL RANKADI  
*Deconstruction of a construction for  
a construction*  
Mixed media. 2100 x 780mm



NAUDÉ, ANDRÉ  
*Teelaarde, 2008*  
Grumbacher acrylic on canvas. 76 x  
102 cm



NIGRINI, MICHÈLE  
*Wys-aard, 2008*  
Mixed media on masonite box  
frame. 1200 x 900mm



OTTO, ANDRÉ  
*Untitled*, April 2008  
Bronze



PRETORIUS, ANNETTE  
*Armoured figure*, 2008  
Acrylic on canvas. 1500 x 1200mm



PRINSLOO, MARIEKE  
*Verbeelding, Carina Stander die vloedbos sal weer vlieg*, 2008  
Polished reinforced concrete. 77cm high, 47cm wide at shoulders, 37cm wide at base  
Edition of 7. This work 2/7



PRINSLOO, SALOMI  
*Butchered rainbow*, 2008  
Acrylic on board. 1220 x 2440 x 40mm



REDELINGHUYS, IAN  
*Pale male painted female angel*,  
2006/7  
Glass, wood, steel, painted base.  
Two sections including bases: 1600  
x 600 x 300 and 1600 x 300 x  
350mm



ROOS, LIZL (ELIZABETH JOY)  
*Metagenesis*, 2006  
Acrylic on canvas. 700 x 900mm



SEOKA, SAKKIE SELLO  
*Mmango ngwana a tswara thipa ka  
bogaleng*  
Polychrome concrete. 130cm high



*Hope of World Cup Final in South  
Africa*  
Polychrome concrete. 70cm high



STUTZER, RINA  
*Swarming: fever, flight and yoke*,  
2006  
Oil on canvas. 200 x 140cm



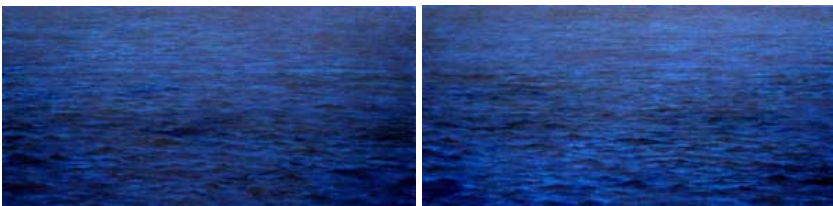
SWANEPOEL, CHENETTE  
*One complete set of strangers*,  
March 2008  
Acrylic and oil on canvas. 127 x  
102cm



SWANEPOEL, NICOLENE (NIKKI)  
*Hybrid Head / Hybrid Heads /  
Hybrid Herd*, 2007-2008  
Ceramic. About 40 x 50 x 30cm  
each



SWARTS (SPANGENBERG), ALET  
*Thought transference*, 2008  
Acrylic on canvas. 210 x 300mm



SWANEPOEL, PIETER  
*Darker (than before)*, 2008  
Oil on canvas. 2 panels, each 1 x  
2m



TAYLOR, ANGUS  
*Co-presence*, 2008  
Cast bronze and stainless steel.  
580 x 1500 x 400mm



TEN KROODEN, LYNETTE  
*Comet*, 2005  
Gold leaf and oil on canvas. 700 x  
700 x 5mm



VAN DER REIS, GUNTHER  
*In the delta*, 2007/8  
Vinyl acetate, acrylic and oil on  
board. 120 x 120cm



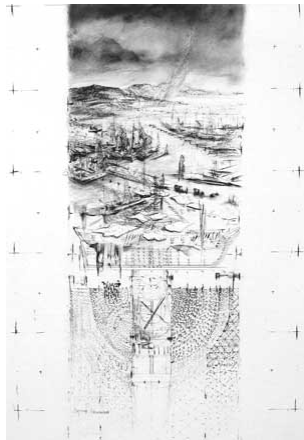
VAN DER SCHIJFF, JOHANN  
*Hemelbesem (Heaven's broom)*,  
2005  
Galvanised and painted mild steel,  
stainless steel, aluminium, brass,  
wood, bristle, plastic, rubber. 272 x  
138 x 100cm



*In Emergency – Lift Border*, 2006,  
100% hand tufted wool, edition of 9,  
330cm x 90cm No. 1/9 onwards  
available of edition



VAN DER WALT, ROSSOUW  
*Reconstruction of a female  
monologue on unpredictability*,  
2007  
Cast marble, steel. Life-size, 1.7m



VERMEULEN, GUSTAV  
*Tethering point*, 2007  
Charcoal on paper. 650 x 510mm



VERMEULEN-BREEDT, MARIE  
*Construction*  
Oil on board. 1020 x 1530mm



VICTOR, DIANE  
*Church Square*, from the series  
*Drawings of Mass Destruction*, April  
2008  
Charcoal on paper. 200 x 150cm



VISSER, GERHARDUS  
FRANCOIS  
*Minutes with the meniscus*, 2008,  
1/12  
Bronze, ceramic and steel. 650 x  
230 x 230mm



VOSSER, RUDOLPH  
*Le Pendu / The Hanged Man /*  
*Voëlvry Loods GPRS*, 2008  
Oil on panel. 200 x 122cm



WILSENACH, BERCO  
*Astrodeiktikon*, 2007  
Fluweelkussing, kopspele en  
kraam. 1470 x 970mm

## SOUTH CAMPUS/SUID-KAMPUS



CRONJé, FRANCI  
*Voorstedelike nagmerries van  
onvergenoegdheid (Suburban  
nightmares of not enough)*, 2006  
Video installation. With the friendly  
cooperation of Adam Levin



GROBLER, DIEK  
*Asturias*, 2007  
Animation.  
Image format 720 x 576 pixels



LÜNEBURG, NATHANI  
*Goodbye Little Miss Perfume*  
Video art: stop-frame animation  
DVD format. Duration 4.09  
minutes, looping



THOM, JOHAN F  
*Birth of a tyrant*, 2007  
 Looped two channel video  
 projection. 3min 27 sec



VÁRI, MINNETTE  
*Fulcrum*, 2007  
 Digital video. Duration: Video 2'30"  
 Stereo Audio 5'00" Looped.  
 Courtesy of the artist and the  
 Goodman Gallery



ZAAYMAN, CARINE  
*Coup de l'oeil*, 2007  
 Video, variable dimensions  
 Edition of 5

## VILLA MUSEUM



BEKKER, IAAN  
*36 Views of Moot Fuji: confluence and decay of  
 successive orders of urbanisation*, 2004 - 2006  
 36 oil paintings in wooden frames. Dimensions  
 variable



MAGDA JOUBERT  
*Mechanism of life*, 2007  
Acrylic on canvas. 2 x 3m



SWART, SUSANNA  
*Empyrean flight*, 2007  
Bronze, edition 1 of 1. 5 x 1.3 x 1.2m

## VISUAL ARTS BUILDING, TOWER/VISUELE KUNSTE-GEBOU, TORING



DU TOIT, GUY  
*Trappe van vergelyking* (*Degrees of comparison*), 2008  
Cast bronze. Size – variable